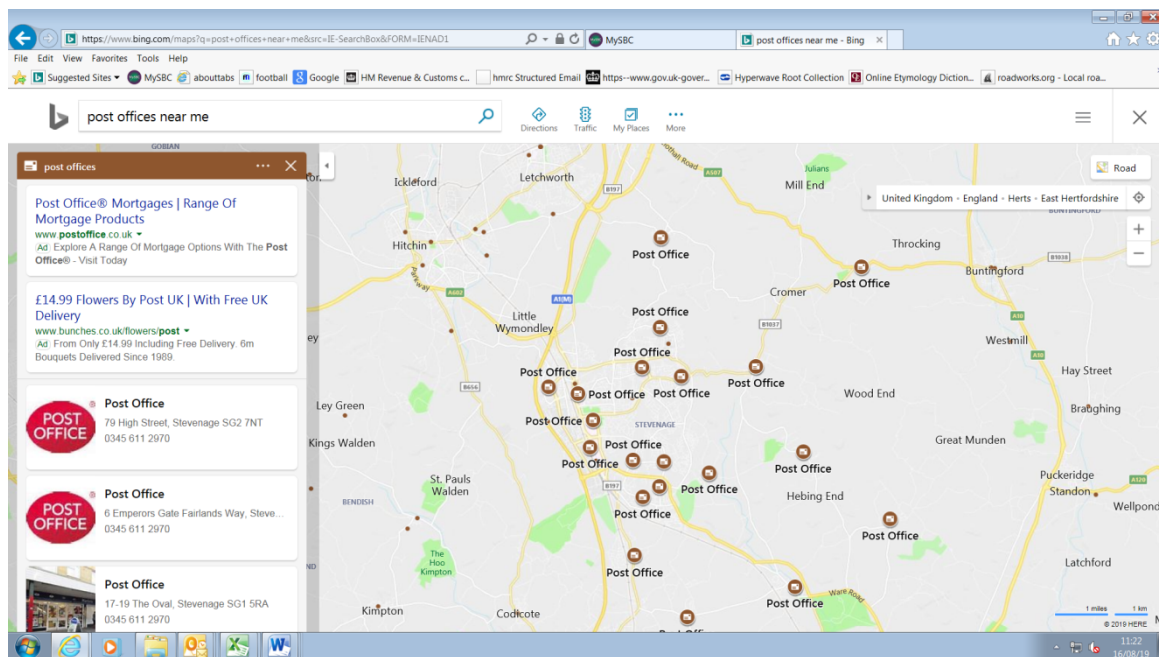


Background document for E&E Select Committee, local Post Office Services in Stevenage

There are currently 11 Post Offices within Stevenage these are:

1. 95 Queensway, Stevenage, SG1 1EA in the WH Smith store
2. 74A High Street, Stevenage in the Waitrose Supermarket (this store is due to close in October 2019 so an alternative location in the old town High Street is being sought by the Post Office)
3. Unit 6, the Neighbourhood Centre, Whitehorse Lane, Great Ashby, Stevenage, SG1 6NH
4. 1 Filey Close, Stevenage, SG1 2JN in the Co-op supermarket
5. 17-19 The Oval, Stevenage, SG1 5RA in Martin's Newsagent store
6. 6 Emperors Gate, Fairlands Way, Stevenage, SG2 7QX
7. 1-3 The Hyde, Stevenage, SG2 9SD, Martin's Newsagent store
8. 3 Hydean Way, Stevenage, SG2 9XH, McColls Newsagent store
9. Post Office Sorting Depot, Six Barrows, London Road, Stevenage, SG1 1AA
10. 126 Oaks Cross, Stevenage, SG2 8LU, Premier store supermarket
11. 245 Broadwater Crescent, Stevenage, SG2 8ET, Co-op supermarket



This is an extract from a Times newspaper article earlier in 2019, quoting the National Federation of Sub-postmasters on the issues facing post offices.

Sub-Postmasters warn of network closures

The National Federation of Sub-Postmasters has warned that many of its 8,000 members have reported such significant drops in income that up to 2,500 sub-post offices are at risk of closure. A survey found that 22% intend to scale back or shut their branches in the next year, with those in rural locations most at risk. The findings come ahead of a meeting tomorrow with MPs, during which federation chief executive Callum Greenhow will give evidence to a Commons inquiry into the post office network. The federation wants ministers to guarantee a continuation of subsidies to branches beyond 2021, the return of some Government services to post office branches, and the development of a broader range of banking and other financial products for them to offer.

[The Times](#) [Financial Times](#)

Follow the link below to a Parliamentary Select Committee from 25 June 2019 on the issues affecting post offices nationally.

<https://www.parliament.uk/business/committees/committees-a-z/commons-select/business-energy-industrial-strategy/inquiries/parliament-2017/post-office-network-17-19/>